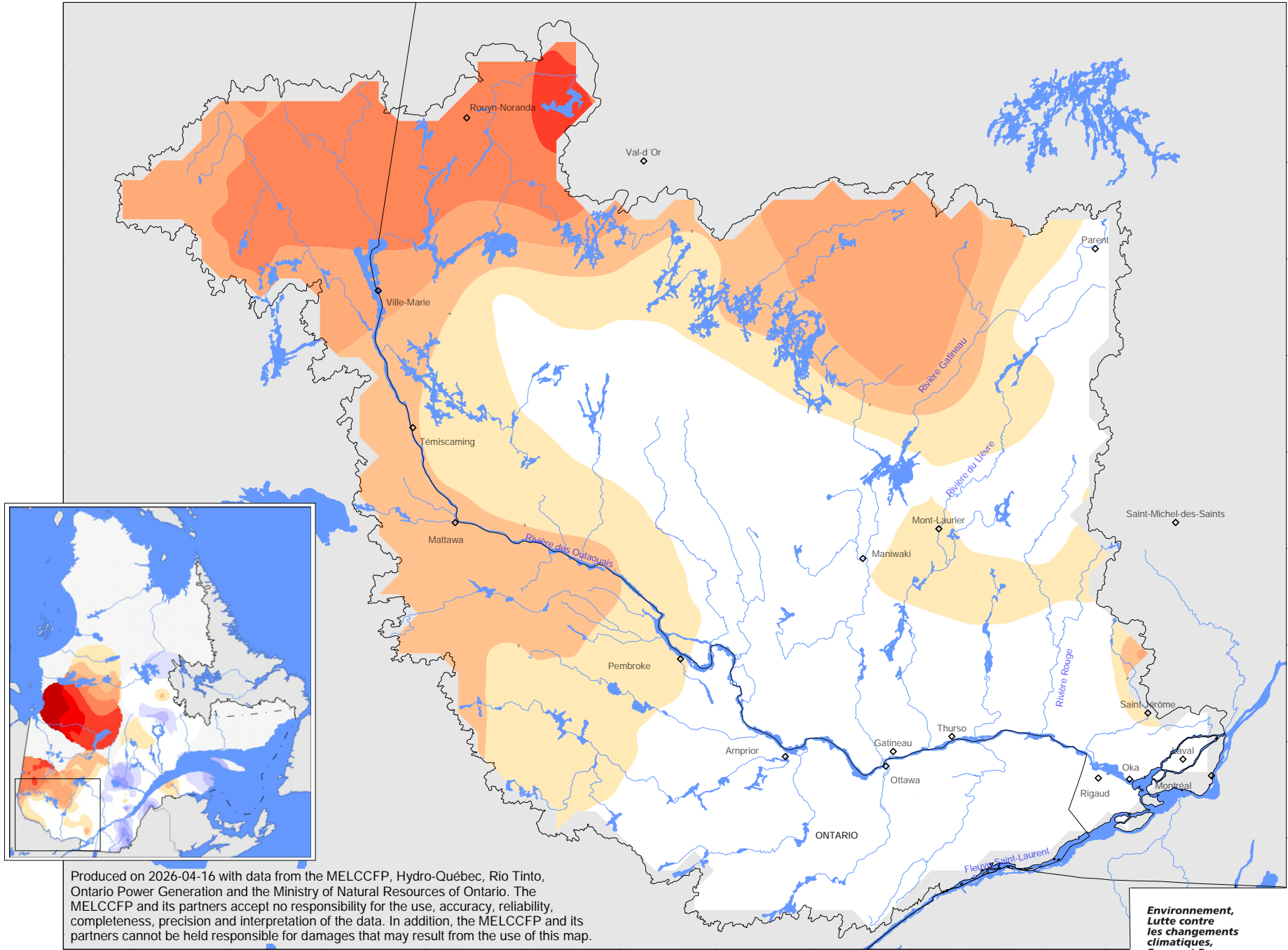


# SNOW WATER EQUIVALENT : OTTAWA RIVER AND MONTRÉAL HYDROGRAPHIC REGION

Departure from normal (cm)

Mid April 2026



Produced on 2026-04-16 with data from the MELCCFP, Hydro-Québec, Rio Tinto, Ontario Power Generation and the Ministry of Natural Resources of Ontario. The MELCCFP and its partners accept no responsibility for the use, accuracy, reliability, completeness, precision and interpretation of the data. In addition, the MELCCFP and its partners cannot be held responsible for damages that may result from the use of this map.

Environnement,  
Lutte contre  
les changements  
climatiques,  
Faune et Parcs

